

2021



EASTERN ATHABASCA REGIONAL MONITORING PROGRAM



INFO@EARM.P.COM

WWW.EARM.P.COM





elets'elts'uni zaa

Dene meaning for the month of January - kissing month

JANUARY
2021

opāwāhcikanasīs

Cree meaning for the month of January - frost exploding moon

December

S	M	T	W	T	F	S
		1	2	3	4	5
6	7	8	9	10	11	12
13	14	15	16	17	18	19
20	21	22	23	24	25	26
27	28	29	30	31		



**EASTERN ATHABASCA REGIONAL
MONITORING PROGRAM**

INFO@EARMP.COM
WWW.EARMP.COM



February

S	M	T	W	T	F	S
	1	2	3	4	5	6
7	8	9	10	11	12	13
14	15	16	17	18	19	20
21	22	23	24	25	26	27
28						

SUNDAY	MONDAY	TUESDAY	WEDNESDAY	THURSDAY	FRIDAY	SATURDAY
					1 New Year's Day	2
3	4	5	6	7	8	9
10	11	12	13	14	15	16
17	18	19	20	21	22	23
24	25	26	27	28	29	30
31						



saduwaze zaa

Dene meaning for the month of January - short month

FEBRUARY

2021

kisīpīsim

Cree meaning for the month of February - the great moon

January

S	M	T	W	T	F	S
					1	2
3	4	5	6	7	8	9
10	11	12	13	14	15	16
17	18	19	20	21	22	23
24	25	26	27	28	29	30
31						



**EASTERN ATHABASCA REGIONAL
MONITORING PROGRAM**

INFO@EARMP.COM
WWW.EARMP.COM



March

S	M	T	W	T	F	S
	1	2	3	4	5	6
7	8	9	10	11	12	13
14	15	16	17	18	19	20
21	22	23	24	25	26	27
28	29	30	31			

SUNDAY	MONDAY	TUESDAY	WEDNESDAY	THURSDAY	FRIDAY	SATURDAY
	1	2	3	4	5	6
7	8	9	10	11	12	13
14	15	16	17	18	19	20
Valentine's Day	Family Day					
21	22	23	24	25	26	27
28						



hah zaa

Dene meaning for the month of March - geese month

MARCH
2021

mikisiwip̄sim

Cree meaning for the month of March - eagle moon

February

S	M	T	W	T	F	S
	1	2	3	4	5	6
7	8	9	10	11	12	13
14	15	16	17	18	19	20
21	22	23	24	25	26	27
28						



**EASTERN ATHABASCA REGIONAL
MONITORING PROGRAM**

INFO@EARMP.COM
WWW.EARMP.COM



April

S	M	T	W	T	F	S
				1	2	3
4	5	6	7	8	9	10
11	12	13	14	15	16	17
18	19	20	21	22	23	24
25	26	27	28	29	30	

SUNDAY	MONDAY	TUESDAY	WEDNESDAY	THURSDAY	FRIDAY	SATURDAY
	1	2	3	4	5	6
7	8	9	10	11	12	13
14	15	16	17 St. Patrick's Day	18	19	20
21	22	23	24	25	26	27
28	29	30	31			



ts'aili zaa

Dene meaning for the month of April - frog month

APRIL
2021

niskipīsim

Cree meaning for the month of April - goose moon

March

S	M	T	W	T	F	S
1	2	3	4	5	6	
7	8	9	10	11	12	13
14	15	16	17	18	19	20
21	22	23	24	25	26	27
28	29	30	31			



**EASTERN ATHABASCA REGIONAL
MONITORING PROGRAM**

INFO@EARM.P.COM
WWW.EARM.P.COM



May

S	M	T	W	T	F	S
						1
2	3	4	5	6	7	8
9	10	11	12	13	14	15
16	17	18	19	20	21	22
23	24	25	26	27	28	29
30	31					

SUNDAY	MONDAY	TUESDAY	WEDNESDAY	THURSDAY	FRIDAY	SATURDAY
				1	2	3
4	5	6	7	8	9 Good Friday	10
Easter Sunday	Easter Monday					
11	12	13	14	15	16	17
18	19	20	21	22	23	24
25	26	27	28	29	30	



egheze

Dene meaning for the month of May - egg month

MAY
2021

athīkipīsim

Cree meaning for the month of May - frog moon

April

S	M	T	W	T	F	S
			1	2	3	
4	5	6	7	8	9	10
11	12	13	14	15	16	17
18	19	20	21	22	23	24
25	26	27	28	29	30	



**EASTERN ATHABASCA REGIONAL
MONITORING PROGRAM**

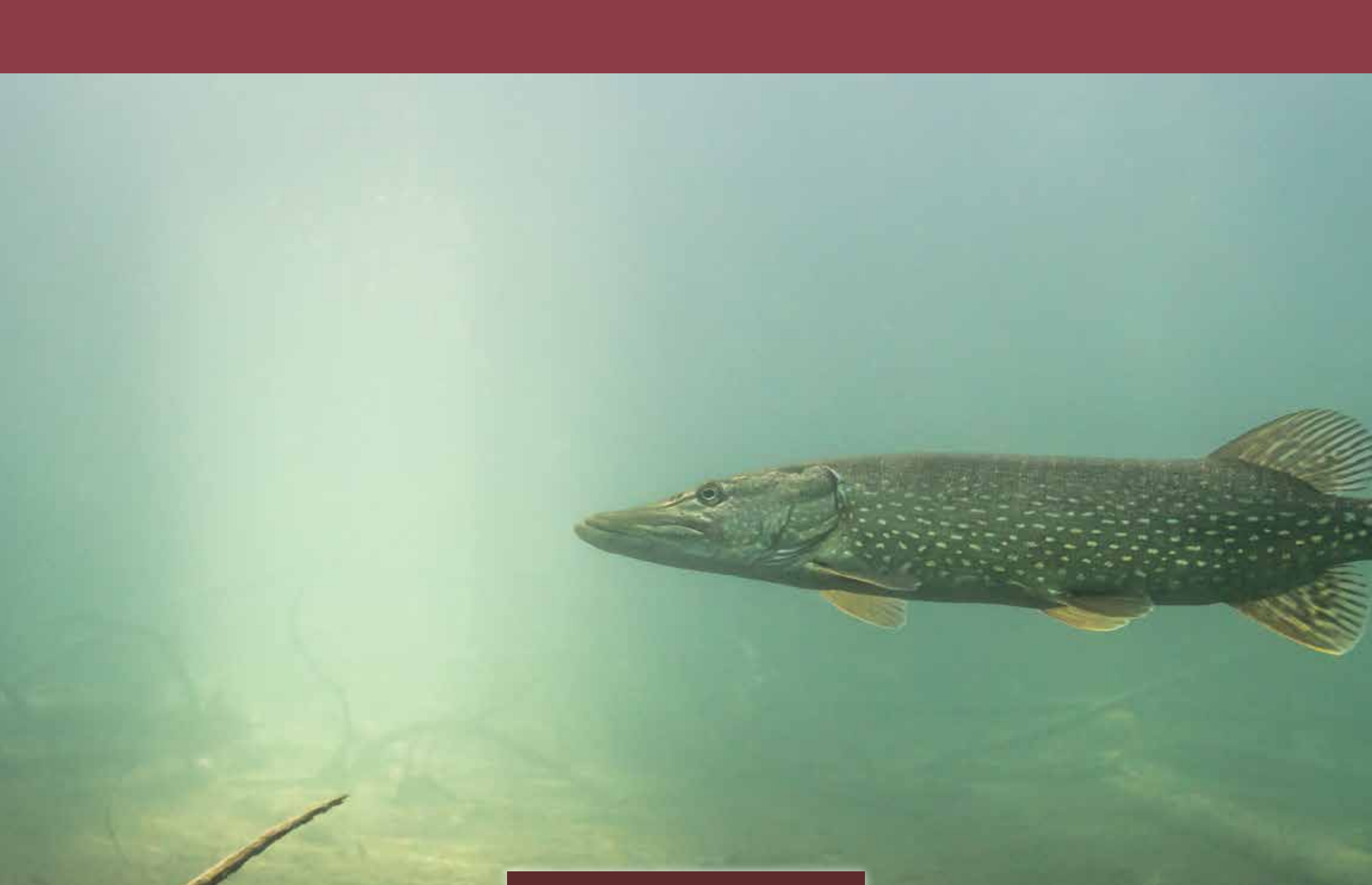
INFO@EARM.P.COM
WWW.EARM.P.COM



June

S	M	T	W	T	F	S
	1	2	3	4	5	
6	7	8	9	10	11	12
13	14	15	16	17	18	19
20	21	22	23	24	25	26
27	28	29	30			

SUNDAY	MONDAY	TUESDAY	WEDNESDAY	THURSDAY	FRIDAY	SATURDAY
						1
2	3	4	5	6	7	8
9 Mother's Day	10	11	12	13	14	15
16	17	18	19	20	21	22
23	24 Victoria Day	25	26	27	28	29
30	31					



egheze yehole zaa

Dene meaning for the month of June - egg hatching month

JUNE
2021

opiniyāwīwipīsim

Cree meaning for the month of June - egg laying moon

May

S	M	T	W	T	F	S
						1
2	3	4	5	6	7	8
9	10	11	12	13	14	15
16	17	18	19	20	21	22
23	24	25	26	27	28	29
30	31					



**EASTERN ATHABASCA REGIONAL
MONITORING PROGRAM**

INFO@EARMP.COM
WWW.EARMP.COM



July

S	M	T	W	T	F	S
				1	2	3
4	5	6	7	8	9	10
11	12	13	14	15	16	17
18	19	20	21	22	23	24
25	26	27	28	29	30	31

SUNDAY	MONDAY	TUESDAY	WEDNESDAY	THURSDAY	FRIDAY	SATURDAY
		1	2	3	4	5
6	7	8	9	10	11	12
13	14	15	16	17	18	19
20	21	22	23	24	25	26
Father's Day	National Indigenous Peoples Day					
27	28	29	30			



bek'e echeth zaa

Dene meaning for the month of July - baby chicks month

JULY
2021

opaskowip̄sim

Cree meaning for the month of July - egg hatching season

June

S	M	T	W	T	F	S
		1	2	3	4	5
6	7	8	9	10	11	12
13	14	15	16	17	18	19
20	21	22	23	24	25	26
27	28	29	30			



**EASTERN ATHABASCA REGIONAL
MONITORING PROGRAM**

INFO@EARMP.COM
WWW.EARMP.COM



August

S	M	T	W	T	F	S
1	2	3	4	5	6	7
8	9	10	11	12	13	14
15	16	17	18	19	20	21
22	23	24	25	26	27	28
29	30	31				

SUNDAY	MONDAY	TUESDAY	WEDNESDAY	THURSDAY	FRIDAY	SATURDAY
				1	2	3
				Canada Day		
4	5	6	7	8	9	10
11	12	13	14	15	16	17
18	19	20	21	22	23	24
25	26	27	28	29	30	31



bek'e ideli zaa

Dene meaning for the month of August - bird first flying month

AUGUST
2021

ohpahowip̄sim

Cree meaning for the month of August - flying up moon

July

S	M	T	W	T	F	S
				1	2	3
4	5	6	7	8	9	10
11	12	13	14	15	16	17
18	19	20	21	22	23	24
25	26	27	28	29	30	31



**EASTERN ATHABASCA REGIONAL
MONITORING PROGRAM**

INFO@EARMP.COM
WWW.EARMP.COM



September

S	M	T	W	T	F	S
			1	2	3	4
5	6	7	8	9	10	11
12	13	14	15	16	17	18
19	20	21	22	23	24	25
26	27	28	29	30		

SUNDAY	MONDAY	TUESDAY	WEDNESDAY	THURSDAY	FRIDAY	SATURDAY
1	2 Saskatchewan Day	3	4	5	6	7
8	9	10	11	12	13	14
15	16	17	18	19	20	21
22	23	24	25	26	27	28
29	30	31				



bek'e elghadi zaa

Dene meaning for the month of September - caribou or moose mating month

SEPTEMBER

2021

nimitahamowip̄sim

Cree meaning for the month of September - rutting moon

August

S	M	T	W	T	F	S
1	2	3	4	5	6	7
8	9	10	11	12	13	14
15	16	17	18	19	20	21
22	23	24	25	26	27	28
29	30	31				



**EASTERN ATHABASCA REGIONAL
MONITORING PROGRAM**

INFO@EARMP.COM
WWW.EARMP.COM



October

S	M	T	W	T	F	S
					1	2
3	4	5	6	7	8	9
10	11	12	13	14	15	16
17	18	19	20	21	22	23
24	25	26	27	28	29	30
31						

SUNDAY	MONDAY	TUESDAY	WEDNESDAY	THURSDAY	FRIDAY	SATURDAY
			1	2	3	4
5	6 Labour Day	7	8	9	10	11
12	13	14	15	16	17	18
19	20	21	22	23	24	25
26	27	28	29	30 Orange Shirt Day		



nihoteni zaa

Dene meaning for the month of October - freezing month

OCTOBER
2021

pimahamowip̄sim

Cree meaning for the month of October - migrating moon

September

S	M	T	W	T	F	S
			1	2	3	4
5	6	7	8	9	10	11
12	13	14	15	16	17	18
19	20	21	22	23	24	25
26	27	28	29	30		



**EASTERN ATHABASCA REGIONAL
MONITORING PROGRAM**

INFO@EARMP.COM
WWW.EARMP.COM



November

S	M	T	W	T	F	S
	1	2	3	4	5	6
7	8	9	10	11	12	13
14	15	16	17	18	19	20
21	22	23	24	25	26	27
28	29	30				

SUNDAY	MONDAY	TUESDAY	WEDNESDAY	THURSDAY	FRIDAY	SATURDAY
					1	2
3	4	5	6	7	8	9
10	11 Thanksgiving	12	13	14	15	16
17	18	19	20	21	22	23
24	25	26	27	28	29	30
31 Halloween						



eyune zaa

Dene meaning for the month of November - crazy month or all souls

NOVEMBER

2021

kaskatinowip̄sim

Cree meaning for the month of November - freeze up moon

October

S	M	T	W	T	F	S
					1	2
3	4	5	6	7	8	9
10	11	12	13	14	15	16
17	18	19	20	21	22	23
24	25	26	27	28	29	30
31						



**EASTERN ATHABASCA REGIONAL
MONITORING PROGRAM**

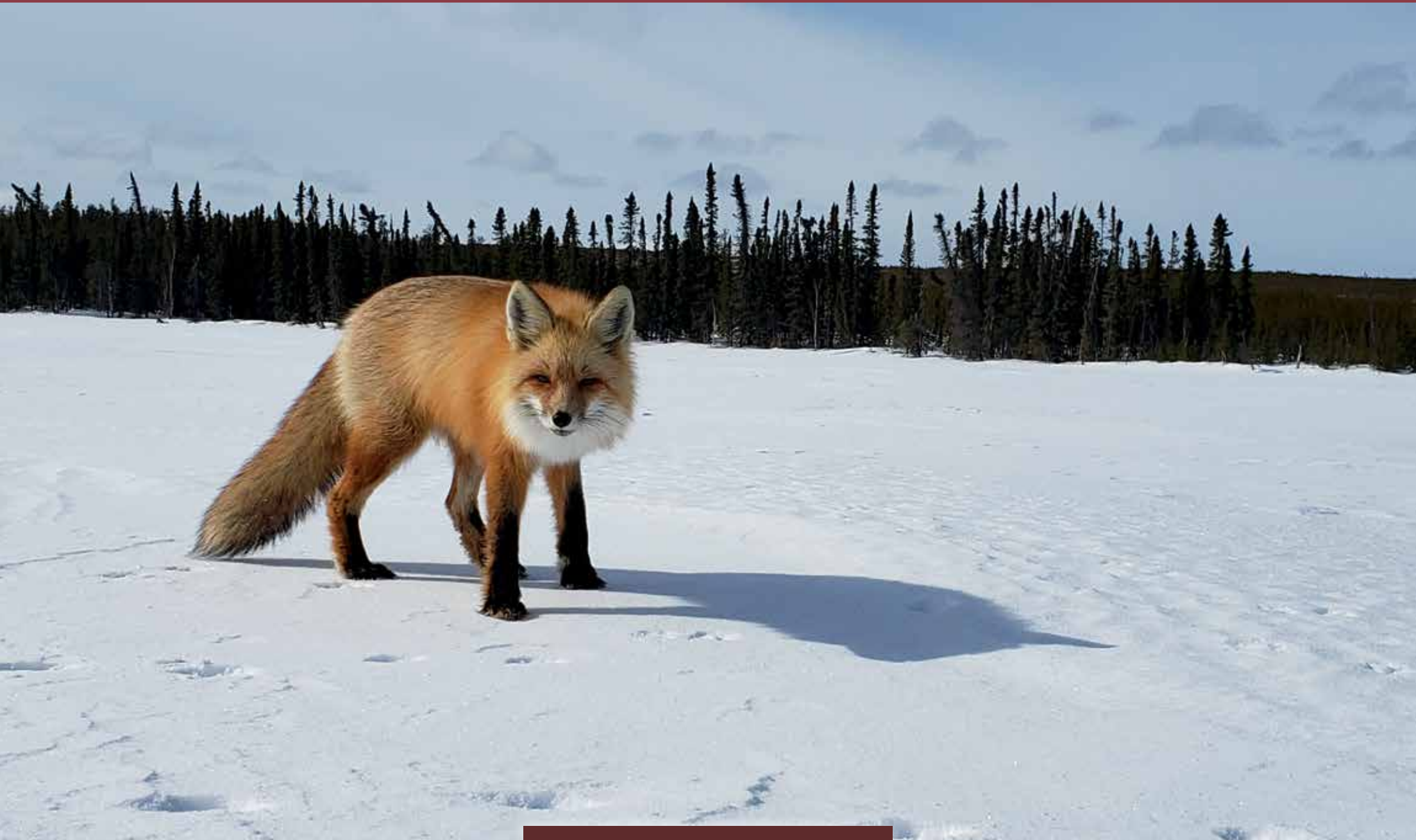
INFO@EARMP.COM
WWW.EARMP.COM



December

S	M	T	W	T	F	S
			1	2	3	4
5	6	7	8	9	10	11
12	13	14	15	16	17	18
19	20	21	22	23	24	25
26	27	28	29	30	31	

SUNDAY	MONDAY	TUESDAY	WEDNESDAY	THURSDAY	FRIDAY	SATURDAY
	1	2	3	4	5	6
7	8	9	10	11 Remembrance Day	12	13
14	15	16	17	18	19	20
21	22	23	24	25	26	27
28	29	30				



tedhe yati zaa

*Dene meaning for the month of December - midnight mass
or Christmas month*

DECEMBER
2021

thithikopiwipisim

Cree meaning for the month of December - hoar frost moon

November

S	M	T	W	T	F	S
1	2	3	4	5	6	
7	8	9	10	11	12	13
14	15	16	17	18	19	20
21	22	23	24	25	26	27
28	29	30				



**EASTERN ATHABASCA REGIONAL
MONITORING PROGRAM**

INFO@EARMP.COM
WWW.EARMP.COM



January

S	M	T	W	T	F	S
						1
2	3	4	5	6	7	8
9	10	11	12	13	14	15
16	17	18	19	20	21	22
23	24	25	26	27	28	29
30	31					

SUNDAY	MONDAY	TUESDAY	WEDNESDAY	THURSDAY	FRIDAY	SATURDAY
			1	2	3	4
5	6	7	8	9	10	11
12	13	14	15	16	17	18
19	20	21	22	23	24	25
26	27	28	29	30	31	Christmas Day
Boxing Day						

2022 Calendar

January

S	M	T	W	T	F	S
						1
2	3	4	5	6	7	8
9	10	11	12	13	14	15
16	17	18	19	20	21	22
23	24	25	26	27	28	29
30	31					

February

S	M	T	W	T	F	S
		1	2	3	4	5
6	7	8	9	10	11	12
13	14	15	16	17	18	19
20	21	22	23	24	25	26
27	28					

March

S	M	T	W	T	F	S
		1	2	3	4	5
6	7	8	9	10	11	12
13	14	15	16	17	18	19
20	21	22	23	24	25	26
27	28	29	30	31		

April

S	M	T	W	T	F	S
					1	2
3	4	5	6	7	8	9
10	11	12	13	14	15	16
17	18	19	20	21	22	23
24	25	26	27	28	29	30

May

S	M	T	W	T	F	S
1	2	3	4	5	6	7
8	9	10	11	12	13	14
15	16	17	18	19	20	21
22	23	24	25	26	27	28
29	30	31				

June

S	M	T	W	T	F	S
			1	2	3	4
5	6	7	8	9	10	11
12	13	14	15	16	17	18
19	20	21	22	23	24	25
26	27	28	29	30		

July

S	M	T	W	T	F	S
					1	2
3	4	5	6	7	8	9
10	11	12	13	14	15	16
17	18	19	20	21	22	23
24	25	26	27	28	29	30
31						

August

S	M	T	W	T	F	S
	1	2	3	4	5	6
7	8	9	10	11	12	13
14	15	16	17	18	19	20
21	22	23	24	25	26	27
28	29	30	31			

September

S	M	T	W	T	F	S
				1	2	3
4	5	6	7	8	9	10
11	12	13	14	15	16	17
18	19	20	21	22	23	24
25	26	27	28	29	30	

October

S	M	T	W	T	F	S
						1
2	3	4	5	6	7	8
9	10	11	12	13	14	15
16	17	18	19	20	21	22
23	24	25	26	27	28	29
30	31					

November

S	M	T	W	T	F	S
		1	2	3	4	5
6	7	8	9	10	11	12
13	14	15	16	17	18	19
20	21	22	23	24	25	26
27	28	29	30			

December

S	M	T	W	T	F	S
				1	2	3
4	5	6	7	8	9	10
11	12	13	14	15	16	17
18	19	20	21	22	23	24
25	26	27	28	29	30	31

NOTES

2021



EASTERN ATHABASCA REGIONAL MONITORING PROGRAM

EARMPP

The Eastern Athabasca Regional Monitoring Program (EARMPP) is a joint, long-term environmental monitoring program established in 2011 under the Province of Saskatchewan's Boreal Watershed Initiative. The EARMPP was designed to identify potential cumulative effects downstream of uranium mining and milling operations in the Eastern Athabasca region of northern Saskatchewan. Cumulative effects are defined as impacts on the environment that result from the incremental impact of an action when added to other past, present, and foreseeable future actions (Joint Panel 1992). Cumulative effects might occur when similar projects overlap spatially, such as when two watersheds exposed to uranium mining and milling activities converge. Cumulative effects may also occur temporally if contaminants are emitted into the environment over extended periods of time. The EARMPP framework includes two sub-programs: a community program and a technical program. The technical program was established to monitor long-term changes in the aquatic environment far-field downstream of uranium mining and milling operations in the Eastern Athabasca region. The community program was established to monitor the safety of traditionally harvested country foods from the communities located in the Eastern Athabasca region.

Community Program

Harvesting and eating traditional country foods (berries, fish, and wild game) is an important part of the Indigenous lifestyle in northern Saskatchewan and contributes to an overall healthy lifestyle through physical activity and healthy eating. The intent of the EARMPP community program is to provide confidence to community members that their traditional country foods remain safe to eat. The sampling program started in 2011. The community program tests water, berries, fish, birds, and mammals. All samples are collected independently by, or with the aid of, community members from Black Lake Denesuline First Nation, Camsell Portage, Fond du Lac Denesuline First Nation, Stony Rapids, Uranium City, Wollaston Lake, and Hatchet Lake Denesuline First Nation. The results of the most recent community sampling program are available at www.earmp.com.

Technical Program

The focus of the technical program was to gather a two-year baseline of water quality, sediment quality, fish chemistry, and benthic invertebrate community data from locations far downstream of uranium mining and milling operations and reference locations in northern Saskatchewan. This monitoring program is completed and the data will be used to assess future cumulative effects. The technical sampling program results of the program are also available at www.earmp.com.



Dene words and meanings obtained from Rose Joseyounen, Wollaston Lake, SK.

Cree words and meanings obtained from: www.giftoflanguageandculture.ca

Photo credits: Tristian Aitken, Jon Behuniak, Alijah Bos, Beth Dolmage, Shelly Fisher, and Mitchell Thorarinson.

**EASTERN ATHABASCA REGIONAL
MONITORING PROGRAM**

INFO@EARM.P.COM
WWW.EARM.P.COM

